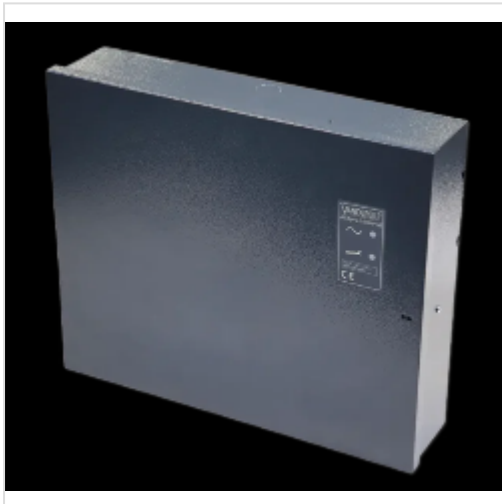


ACTPRO-1500-POE
ACTpro 1500PoE Single Door Controller With Integral PoE PSU

Description



The ACTpro 1500PoE is a single door IP controller from Vanderbilt Industries. It is a powerful and versatile controller that is ideal for a wide range of access control applications, along with being easy to install and configure. It is also compatible with a wide range of access control devices, including readers, locks, and exit buttons.

Key Features:

- Support for up to 60,000 users
- Support for OSDP readers
- PoE++ (PoE Ultra) PSU with 0.5Amp for battery charging
- Dual port Ethernet switch
- Voltage monitoring and break glass monitoring
- Rich set of advanced features

The ACTpro-1500PoE is easy to install and configure, and it can be integrated with a variety of access control systems. It is also compatible with a wide range of access control devices, including readers, locks, and exit buttons.

Product Specifications

Weight	3060 kg
Brand	ACRE
Power-requirement	PoE
Mounting	Surface Mount
Operating-temperature	-10°C to 40°C
Construction	Mild Steel
Colours	Grey
Access-control-system-type	Networked